



METHODIST  
SPECIALTY CARE CENTER

A DIVISION OF METHODIST REHABILITATION CENTER



unique active social  
special  
A PLACE TO CALL HOME

[METHODISTSPECIALTYCARE.ORG](http://METHODISTSPECIALTYCARE.ORG)

When Methodist Specialty Care Center opened, people used a lot of flattering phrases to describe Mississippi's first long-term care residential facility designed especially for the younger severely disabled person.

But "a place to call home" is the description we like best.

The unique accommodations combined with skilled clinical services provide an environment where residents can thrive.

Methodist Specialty Care Center residents stay active, socialize, learn new things, venture out into the community and enjoy life to the fullest extent possible. Examples of activities include fishing, shopping, reading, attending sporting events and festivals, web-based studies, worship services and dining with friends and family.

That makes the center the perfect place for those who are completely reliant on others for their activities of daily living, but





## WHAT'S SPECIAL ABOUT METHODIST SPECIALTY CARE CENTER?

Our Residents | Our Staff | Our Facility | Our Mission



# OUR RESIDENTS

Methodist Specialty Care Center is home to a unique population.



## ACTIVITIES

SPORTING EVENTS  
VISITS FROM FAMILY & FRIENDS  
RESIDENT SOCIAL FUNCTIONS  
WORSHIP SERVICES AVAILABLE  
WEB-BASED EDUCATION  
SPECIAL VAN FOR TRANSPORTATION  
COLLEGE CLASSES AND SOCIAL OUTINGS  
CONVENIENT TO RESTAURANTS AND SHOPPING

Our typical resident is someone age 17 to 55 who is severely disabled and must rely on others for maximum assistance with most activities. Residents generally have additional clinical needs such as bowel and bladder management, skin management, medication management and other complex, but stable clinical requirements. Examples include people who are quadriplegics due to trauma, cerebral palsy, multiple sclerosis, or traumatic brain injury; ventilator-dependent patients who are unable to wean and have reached maximum pulmonary rehab potential and are respiratory stable; and permanent tracheostomy patients who need maximum assistance with activities of daily living.



# OUR STAFF



In many health care systems, responding to the needs of severely disabled people is just one job among many.

At Methodist Specialty Care Center, it's our sole focus, making our staff particularly qualified to deliver a high standard of care. Our physicians, nurses, therapists and support staff possess a wealth of experience and are dedicated to helping residents live life to the fullest.

Because the center is a division of Methodist Rehabilitation Center, the staff receives support through a collaborative relationship with the hospital's outstanding health care team and researchers. This gives center residents access to knowledge about the latest medical advances in treating disabilities, including long-term experimental drug trials, therapeutic treatments and advanced assistive technology services, as well as biomedical and orthotic and prosthetic services.

## CLINICAL SERVICES

DAILY PHYSICIAN OVERSIGHT | REGISTERED NURSES | SUPERVISED DRUG  
ADMINISTRATION | RESPIRATORY THERAPY | PHYSICAL THERAPY  
THERAPEUTIC RECREATION PROGRAM | CLINICAL TRIALS SUPPORTED  
SUPPORT FROM BIOMEDICAL ENGINEERS AND ASSISTIVE TECHNOLOGY SPECIALISTS





# OUR FACILITIES

Our center is located on Methodist Rehabilitation Center's beautifully landscaped and wooded 25-acre East Campus in Flowood, a suburb of Jackson, Mississippi. Flowood is a vibrant community with easy access to restaurants, shopping centers, hospitals, airports, hotels and major sports complexes.

Methodist Specialty Care Center features all private rooms and couples state-of-the-art medical technology with a warm, inviting and barrier-free environment. On each floor, three short, carpeted hallways radiate from a central area that houses a staff center and a large living room. This layout helps to eliminate the institutional feel of long hospital-like corridors while maintaining easy access between the staff centers and the residents' rooms.

Each private room features its own large bathroom and comes furnished with a telephone, television, high-speed Internet access, discreetly concealed medical gases and the latest state-of-the art technology in clinical bed design. Rooms also can be custom equipped for residents who use voice-activated or breath-controlled devices so that residents may be as independent as possible in their rooms.

## FACILITY HIGHLIGHTS

LARGE COMMON AREAS ON BOTH RESIDENT FLOORS

PRIVATE ROOMS WITH PRIVATE BATHROOMS

SIXTY SMALL PRIVATE "GETAWAY" SPACES

STATE-OF-THE-ART BEDS

ENVIRONMENTAL CONTROL UNITS CUSTOMIZED FOR EACH RESIDENT

TELEPHONES, TELEVISIONS AND INTERNET ACCESS IN EACH ROOM

INDOOR AND OUTDOOR DINING AREAS

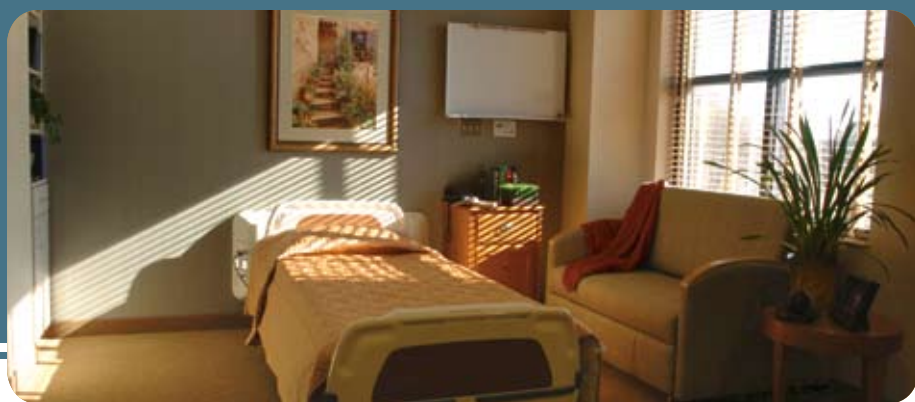




Common areas located on each floor offer residents a place to gather and provide a picturesque view of Mirror Lake. There's also an attractive dining area on the first floor that opens to a beautifully landscaped rose-covered courtyard.

The facility's design includes many safety features, including 24-hour security services, an emergency power generator, a fire sprinkler system, sophisticated surveillance cameras and exterior storm-rated glass windows.

It is important to note that the facility and the entire campus are designated smoke-free and tobacco-free areas. Residents, staff and visitors are directed to areas away from the center's campus if they wish to use tobacco products. Staff will not assist residents at any time with the use of tobacco products. Residents unable to comply with this policy are encouraged not to apply for residency at Methodist Specialty Care Center.



ATTRACTIVE DINING ROOM OVERLOOKING ROSE-COVERED COURTYARD

FULL-SERVICE LAUNDRY

SECURITY 24 HOURS A DAY

LARGE LANDSCAPED, ACCESSIBLE CAMPUS

BUILDING OVERLOOKS MIRROR LAKE

CONVENIENT PARKING FOR VISITORS



# OUR MISSION

Since our beginnings in 1975, Methodist Rehabilitation Center has been a leader in rehabilitation research and providing services to people with neurological and orthopedic illnesses and injuries.

Methodist is the first hospital in the state to be named one of America's best hospitals by U.S. News and World Report. And we're one of only 16 hospitals in the country designated as a Traumatic Brain Injury Model System by the National Institute on Disability and Rehabilitation Research.

Our goal at Methodist Specialty Care Center is to continue our proud tradition by providing a caring environment that enriches the health and well-being of residents and their families and respects the unique contributions of each individual.

Residents are encouraged to strive for the highest level of independence possible, and every effort is made to fulfill their clinical, social and spiritual needs.

---

## DRIVING DIRECTIONS

**From I-55:** Take Lakeland Drive east to Layfair Drive (just past the Texaco station on the right). Turn right on Layfair Drive and continue until you see Mirror Lake on the left. Methodist Specialty Care Center, a three-story building, is right across the street from Mirror Lake on Red Fern Place.

**From Lakeland Drive (Hwy 25) west:** Continue on Lakeland Drive until you see River Oaks Drive. At the light, make a left on River Oaks Drive and take the next right onto Layfair Drive. You will see a large Methodist Rehabilitation Center East Campus sign at the corner. Continue down Layfair until you see Mirror Lake. Methodist Specialty Care Center will be across the street on the left. Take Red Fern Place to the Center's main entrance.

**Additional Information:** Methodist Specialty Care Center is located just off Lakeland Drive in Flowood. Nearby is a major shopping area, a large number of restaurants, an airport, a post office, a hospital, a pharmacy, a library and physician offices. The Center is also accessible from Flowood Drive.





ADDITIONAL INFORMATION →



FOR MORE INFORMATION

601-420-7760

METHODISTSPECIALTYCARE.ORG





**METHODIST**  
SPECIALTY CARE CENTER

A DIVISION OF METHODIST REHABILITATION CENTER



ONE LAYFAIR DRIVE, SUITE 500, FLOWOOD, MS 39232  
P : 601-420-7760 | [METHODISTSPECIALTYCARE.ORG](http://METHODISTSPECIALTYCARE.ORG)